

Hospice Wellington Energy Features

- ♦ Living wall connected to fresh air mechanical system to filter and cleanse indoor air
- ♦ Rainwater cistern for landscape irrigation
- ♦ Entry air lock keeps interior warm and clean
- ♦ Residential materials, windows, gables and rooflines
- ♦ Natural light and outside views from every room
- ♦ Natural ventilation - operating windows
- ♦ Native landscape materials
- ♦ Solar heated hot water
- ♦ Centralized mechanical roof to isolate exhaust and noise
- ♦ Outdoor resident decks and connection with meditative garden, gazebo and shade
- ♦ Heat recovery ventilation
- ♦ Individual resident room temperature for heating and air conditioning
- ♦ Passive solar heating in winter and sun shading to reduce heat gain in summer
- ♦ Orientation to take advantage of prevailing breezes
- ♦ Natural, healthy materials and finishes

Hospice Design

It is important that the design should go beyond just providing shelter and a place of caring. As death is an integral part of life, this should be honoured and celebrated in the design. The hospice should create a sense of allowing the dying to accept that they are dying and allow them to cope with dignity and in their own way.

Having practiced for 32 years and designing over a 1,000 varied health focused and community based buildings, J. David McAuley Architect Inc. has established a trust and reputation for providing excellent and economical architectural services to many specialized residential and community clients throughout Ontario.

J. David McAuley Architect Inc.

J. David McAuley, Building Biologist
360 Woolwich St.
Guelph, ON N1H 3W6
(519) 823-2441
office@jdm-arch.com

www.jdm-arch.com



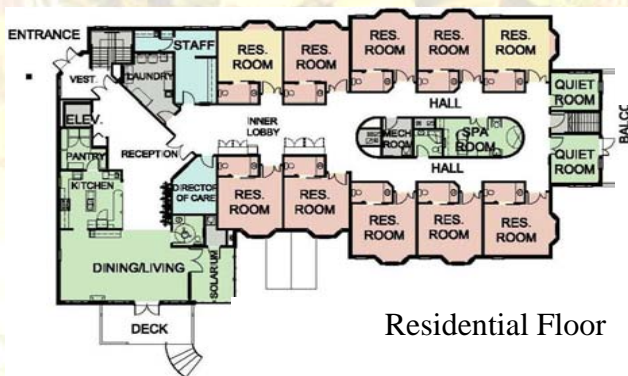
J . D A V I D M C A U L E Y A R C H I T E C T I N C .



Hospice
Wellington,
Guelph

Residential Floor

- 10 private residential rooms with bay windows and private deck
- Open living room and dining room
- Warm residential atmosphere
- Care Centre, Spa, Residence Lounge
- Open atrium with living wall
- Tranquility garden with gazebo



Community Programs Floor

- Palliative care clinic
- Community support services offices
- Children's services
- Volunteer training multipurpose room
- Community room
- Library and resources
- Large welcoming foyer

